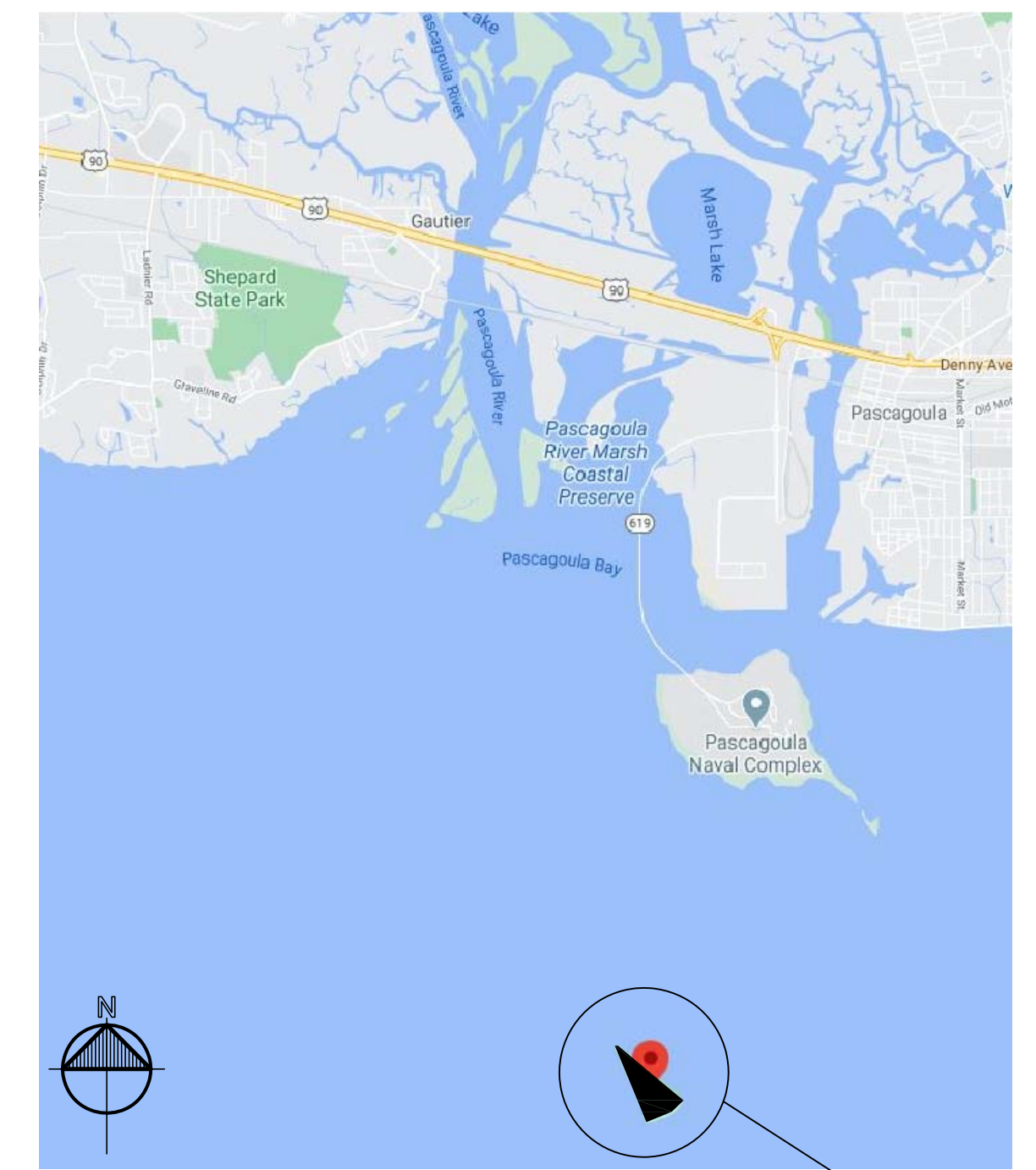


**ROUND ISLAND
UNDESIGNATED 21.2378 ACRE TRACT
(TAX PARCEL # 01933010.000)
MISSISSIPPI SOUND
SECTIONS 33 & 34, T8S-R6W; SEC. 4, T9S-R6W
ST. STEPHENS MERIDIAN
JACKSON COUNTY
MISSISSIPPI**

LEGEND	
	EXIST. GUY WIRE
	EXIST. DRAIN LINE
	EXIST. CONC. AREA
	OVERHEAD UTILITY
	EXIST. BOUNDARY LINE
	CONC.
	WATER METER
	GAS METER
	GAS VALVE
	WATER VALVE
	DENOTES PKMIL FOUND
	DENOTES 5/8" IRON ROD FOUND
	DENOTES 1/2" IRON ROD SET
	EXIST. UG ELECTRIC LINE
	EXIST. UG TELEPHONE LINE
	EXIST. GRAVITY SEWER LINE
	EXIST. WATER LINE
	EXIST. GAS LINE
	EXIST. WOOD FENCE
	EXIST. MONITORING WELL LID
	EXIST. SEWER MANHOLE
	EXIST. SEWER MANHOLE
	EXIST. SIGN
	EXIST. POWER OR TELEPHONE POLE
	EXIST. TREE
	HOSE BIB
	LIGHT POLE
	EXIST. DITCH
	EXIST. MAILBOX
	EXIST. TRAFFIC LIGHT
	EXIST. FIRE HYDRANT
	EXIST. DROP INLET
	EXIST. SEWER CLEAN OUT
	DENOTES CROSS CUT
	TITLE
	ACTUAL
	PORTION
	LINE NOT TO SCALE

NOTES:

1. THE LOCATIONS OF UNDERGROUND AND OTHER NONVISIBLE UTILITIES SHOWN HEREON HAVE BEEN PLOTTED BASED UPON DATA EITHER FURNISHED BY THE AGENCIES CONTROLLING SUCH DATA AND/OR OBTAINED FROM RECORDS MADE AVAILABLE TO US BY THE AGENCIES CONTROLLING SUCH RECORDS. WHERE FOUND, THE SURFACE FEATURES OF UTILITIES ARE SHOWN. THE ACTUAL NONVISIBLE LOCATIONS MAY VARY FROM THOSE SHOWN HEREON. EACH AGENCY SHOULD BE CONTACTED RELATIVE TO THE PRECISE LOCATION OF ITS UNDERGROUND INSTALLATIONS PRIOR TO ANY RELIANCE UPON THE ACCURACY OF SUCH LOCATIONS SHOWN HEREON. PRIOR TO EXCAVATION AND DIGGING CALL MISSISSIPPI ONE CALL.
2. THIS IS A CLASS C BOUNDARY SURVEY.
3. NO TITLE RESEARCH OR UTILITY SERVITUDE RESEARCH WAS PERFORMED BY THE SURVEYOR.
4. BEARINGS SHOWN ARE BASED ON STATE PLANE COORDINATES (MS EAST ZONE-NAD83)
5. MEAN HIGH WATER DETERMINED USING WATER LEVEL DATA FROM NOAA STATION - PASCAGOULA NOAA LAB MS - STATION ID 8741533 (MHW = 2.10' NAVD88) IN CONJUNCTION WITH ELEVATION DATA COLLECTED ON THE ISLAND ON THE DATE OF THE SURVEY.
6. ELEVATIONS ARE BASED ON NAVD88. ELEVATIONS WERE ESTABLISHED BY RTK GPS SURVEYING - LEICA SMARTNET.



VICINITY MAP
(NOT TO SCALE)

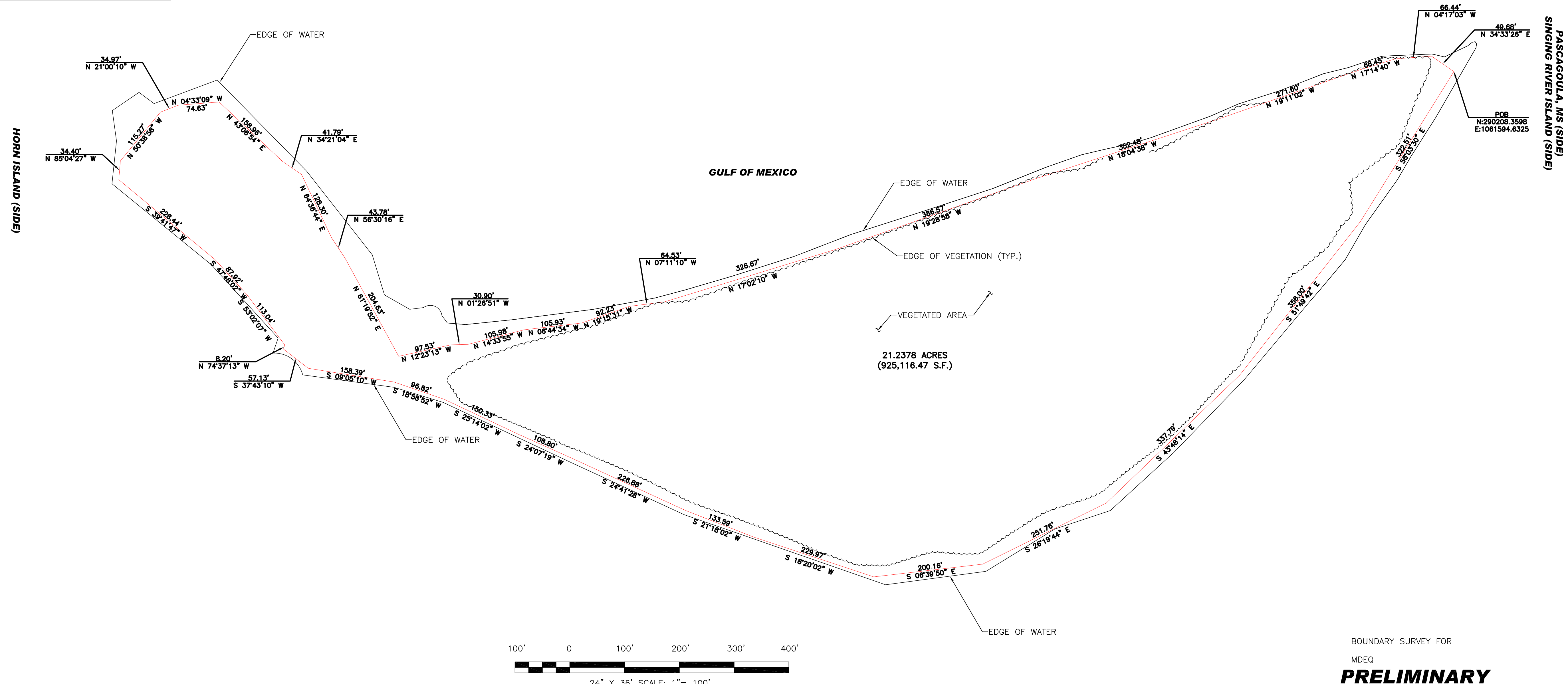
LEGAL DESCRIPTION - ROUND ISLAND (21.2378 ACRE TRACT):

A CERTAIN PARCEL OF GROUND TOGETHER WITH ALL BUILDINGS AND IMPROVEMENTS LOCATED THEREON BEING ALL OF FRACTIONAL SECTIONS 33 AND 34, TOWNSHIP 8 SOUTH, RANGE 6 WEST AND SECTION 4, TOWNSHIP 9 SOUTH 6 WEST, ST. STEPHENS MERIDIAN, SAID LAND BEING A PART OF ROUND ISLAND IN THE MISSISSIPPI SOUND, IN JACKSON COUNTY, STATE OF MISSISSIPPI, LESS AND EXCEPT ANY PORTION OF SUCH LANDS LYING AND BEING BELOW THE MEAN HIGH WATER MARK AND CLAIMED BY THE STATE OF MISSISSIPPI AS PUBLIC TRUST TIDELANDS, ALSO TO BEING TAX PARCEL # 01933010.000 IN THE RECORDS OF THE TAX ASSESSOR OF JACKSON COUNTY, MISSISSIPPI AND BEING MORE PARTICULARLY DESCRIBED AS FOLLOWS:

COMMENCING AT THE NORTHERN TIP OF THE ISLAND AT A POINT ALONG THE MEAN HIGH WATER MARK AT NORTHING: 290208.3598, EASTING: 1061594.6325, ALSO KNOWN AS THE POINT OF BEGINNING;

- THENCE ALONG SAID MARK SOUTH 58 DEGREES 03 MINUTES 30 SECONDS EAST A DISTANCE OF 322.51 FEET TO A POINT;
- THENCE SOUTH 51 DEGREES 49 MINUTES 42 SECONDS EAST A DISTANCE OF 356.00 FEET TO A POINT;
- THENCE SOUTH 43 DEGREES 48 MINUTES 14 SECONDS EAST A DISTANCE OF 337.79 FEET TO A POINT;
- THENCE SOUTH 26 DEGREES 19 MINUTES 44 SECONDS EAST A DISTANCE OF 251.76 FEET TO A POINT;
- THENCE SOUTH 08 DEGREES 39 MINUTES 50 SECONDS EAST A DISTANCE OF 200.16 FEET TO A POINT;
- THENCE SOUTH 18 DEGREES 20 MINUTES 02 SECONDS WEST A DISTANCE OF 229.97 FEET TO A POINT;
- THENCE SOUTH 21 DEGREES 18 MINUTES 02 SECONDS WEST A DISTANCE OF 133.59 FEET TO A POINT;
- THENCE SOUTH 24 DEGREES 41 MINUTES 28 SECONDS WEST A DISTANCE OF 228.88 FEET TO A POINT;
- THENCE SOUTH 24 DEGREES 07 MINUTES 19 SECONDS WEST A DISTANCE OF 108.80 FEET TO A POINT;
- THENCE SOUTH 25 DEGREES 14 MINUTES 02 SECONDS WEST A DISTANCE OF 150.33 FEET TO A POINT;
- THENCE SOUTH 18 DEGREES 58 MINUTES 52 SECONDS WEST A DISTANCE OF 96.82 FEET TO A POINT;
- THENCE SOUTH 09 DEGREES 05 MINUTES 10 SECONDS WEST A DISTANCE OF 158.39 FEET TO A POINT;
- THENCE SOUTH 37 DEGREES 43 MINUTES 10 SECONDS WEST A DISTANCE OF 57.13 FEET TO A POINT;
- THENCE NORTH 74 DEGREES 37 MINUTES 13 SECONDS WEST A DISTANCE OF 8.20 FEET TO A POINT;
- THENCE SOUTH 53 DEGREES 02 MINUTES 07 SECONDS WEST A DISTANCE OF 113.04 FEET TO A POINT;
- THENCE SOUTH 47 DEGREES 46 MINUTES 02 SECONDS WEST A DISTANCE OF 87.92 FEET TO A POINT;
- THENCE SOUTH 39 DEGREES 41 MINUTES 47 SECONDS WEST A DISTANCE OF 228.44 FEET TO A POINT;
- THENCE NORTH 85 DEGREES 04 MINUTES 27 SECONDS WEST A DISTANCE OF 34.40 FEET TO A POINT;
- THENCE NORTH 50 DEGREES 38 MINUTES 58 SECONDS WEST A DISTANCE OF 113.27 FEET TO A POINT;
- THENCE NORTH 21 DEGREES 00 MINUTES 10 SECONDS WEST A DISTANCE OF 34.97 FEET TO A POINT;
- THENCE NORTH 04 DEGREES 33 MINUTES 09 SECONDS WEST A DISTANCE OF 74.63 FEET TO A POINT;
- THENCE NORTH 43 DEGREES 06 MINUTES 54 SECONDS EAST A DISTANCE OF 128.30 FEET TO A POINT;
- THENCE NORTH 34 DEGREES 21 MINUTES 04 SECONDS EAST A DISTANCE OF 41.79 FEET TO A POINT;
- THENCE NORTH 64 DEGREES 36 MINUTES 44 SECONDS EAST A DISTANCE OF 128.30 FEET TO A POINT;
- THENCE NORTH 58 DEGREES 30 MINUTES 16 SECONDS EAST TO A POINT;
- THENCE NORTH 61 DEGREES 19 MINUTES 52 SECONDS EAST A DISTANCE OF 204.63 FEET TO A POINT;
- THENCE NORTH 12 DEGREES 23 MINUTES 13 SECONDS WEST A DISTANCE OF 97.53 FEET TO A POINT;
- THENCE NORTH 01 DEGREES 26 MINUTES 51 SECONDS WEST A DISTANCE OF 30.90 FEET TO A POINT;
- THENCE NORTH 14 DEGREES 33 MINUTES 55 SECONDS WEST A DISTANCE OF 105.98 FEET TO A POINT;
- THENCE NORTH 06 DEGREES 44 MINUTES 34 SECONDS WEST A DISTANCE OF 105.93 FEET TO A POINT;
- THENCE NORTH 19 DEGREES 15 MINUTES 31 SECONDS WEST A DISTANCE OF 92.23 FEET TO A POINT;
- THENCE NORTH 07 DEGREES 11 MINUTES 10 SECONDS WEST A DISTANCE OF 64.53 FEET TO A POINT;
- THENCE NORTH 17 DEGREES 02 MINUTES 10 SECONDS WEST A DISTANCE OF 326.67 FEET TO A POINT;
- THENCE NORTH 19 DEGREES 28 MINUTES 58 SECONDS WEST A DISTANCE OF 386.57 FEET TO A POINT;
- THENCE NORTH 18 DEGREES 04 MINUTES 38 SECONDS WEST A DISTANCE OF 352.48 FEET TO A POINT;
- THENCE NORTH 19 DEGREES 11 MINUTES 02 SECONDS WEST A DISTANCE OF 271.60 FEET TO A POINT;
- THENCE NORTH 17 DEGREES 14 MINUTES 40 SECONDS WEST A DISTANCE OF 68.45 FEET TO A POINT;
- THENCE NORTH 04 DEGREES 17 MINUTES 03 SECONDS WEST A DISTANCE OF 66.44 FEET TO A POINT;
- THENCE NORTH 34 DEGREES 26 MINUTES 48 SECONDS EAST A DISTANCE OF 49.68 FEET TO A POINT;
- THENCE SOUTH 34 DEGREES 27 MINUTES 40 SECONDS WEST A DISTANCE OF 34.40 FEET TO A POINT;
- THENCE SOUTH 11 DEGREES 27 MINUTES 56 SECONDS WEST A DISTANCE OF 113.27 FEET TO A POINT;
- THENCE SOUTH 56 DEGREES 38 SECONDS WEST A DISTANCE OF 322.51 FEET TO A POINT;
- THENCE SOUTH 04 DEGREES 33 MINUTES 09 SECONDS WEST A DISTANCE OF 74.63 FEET TO A POINT;
- THENCE SOUTH 43 DEGREES 06 MINUTES 54 SECONDS WEST A DISTANCE OF 128.30 FEET TO A POINT;
- THENCE SOUTH 34 DEGREES 21 MINUTES 04 SECONDS WEST A DISTANCE OF 41.79 FEET TO A POINT;
- THENCE SOUTH 64 DEGREES 36 MINUTES 44 SECONDS WEST A DISTANCE OF 128.30 FEET TO A POINT;
- THENCE SOUTH 58 DEGREES 30 MINUTES 16 SECONDS WEST A DISTANCE OF 128.30 FEET TO A POINT;
- THENCE SOUTH 61 DEGREES 19 MINUTES 52 SECONDS WEST A DISTANCE OF 204.63 FEET TO A POINT;
- THENCE SOUTH 12 DEGREES 23 MINUTES 13 SECONDS WEST A DISTANCE OF 97.53 FEET TO A POINT;
- THENCE SOUTH 01 DEGREES 26 MINUTES 51 SECONDS WEST A DISTANCE OF 30.90 FEET TO A POINT;
- THENCE SOUTH 14 DEGREES 33 MINUTES 55 SECONDS WEST A DISTANCE OF 105.98 FEET TO A POINT;
- THENCE SOUTH 06 DEGREES 44 MINUTES 34 SECONDS WEST A DISTANCE OF 105.93 FEET TO A POINT;
- THENCE SOUTH 19 DEGREES 15 MINUTES 31 SECONDS WEST A DISTANCE OF 92.23 FEET TO A POINT;
- THENCE SOUTH 07 DEGREES 11 MINUTES 10 SECONDS WEST A DISTANCE OF 64.53 FEET TO A POINT;
- THENCE SOUTH 17 DEGREES 02 MINUTES 10 SECONDS WEST A DISTANCE OF 326.67 FEET TO A POINT;
- THENCE SOUTH 19 DEGREES 28 MINUTES 58 SECONDS WEST A DISTANCE OF 386.57 FEET TO A POINT;
- THENCE SOUTH 18 DEGREES 04 MINUTES 38 SECONDS WEST A DISTANCE OF 352.48 FEET TO A POINT;
- THENCE SOUTH 19 DEGREES 11 MINUTES 02 SECONDS WEST A DISTANCE OF 271.60 FEET TO A POINT;
- THENCE SOUTH 17 DEGREES 14 MINUTES 40 SECONDS WEST A DISTANCE OF 68.45 FEET TO A POINT;
- THENCE SOUTH 04 DEGREES 17 MINUTES 03 SECONDS WEST A DISTANCE OF 66.44 FEET TO A POINT;
- THENCE SOUTH 34 DEGREES 26 MINUTES 48 SECONDS WEST A DISTANCE OF 49.68 FEET TO A POINT;
- THENCE SOUTH 34 DEGREES 27 MINUTES 40 SECONDS WEST A DISTANCE OF 34.40 FEET TO THE POINT OF BEGINNING.

CONTAINING AN AREA OF 21.2378 ACRES (925,116.47 S.F.); ALL AS SHOWN ON A SURVEY BY LINFIELD, HUNTER & JUNIUS, INC., DATED NOVEMBER 16, 2020.



LINFIELD, HUNTER & JUNIUS, INC.
PROFESSIONAL ENGINEERS, ARCHITECTS
AND SURVEYORS
3608 18th Street, Suite 200
Metairie, Louisiana 70002

© 2011 by Linfield, Hunter & Junius, Inc.

BOUNDARY SURVEY FOR
MDEQ
PRELIMINARY
NATHAN J. JUNIUS, P.E., R.P.L.S.
NOVEMBER 16, 2020
LH&J JOB No. 17-124
(504) 833-5300